

Atlanta 2 – Load planning system



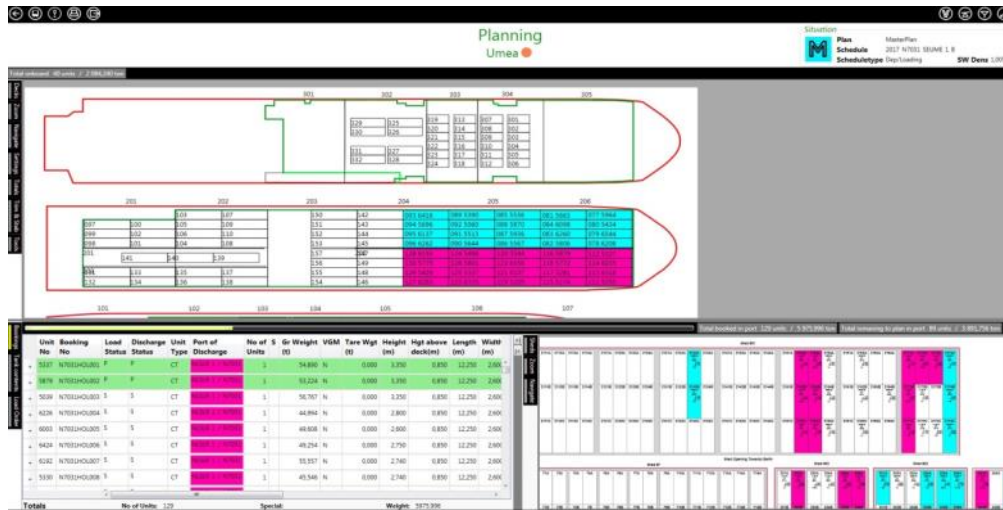
Atlanta 2 is a load planning system designed for RoRo and conventional cargo vessels. The purpose of the system is to be able to handle RoRo units and other types of cargo.

Atlanta 2 offers visibility and overview, allowing the user to drag & drop cargo units directly onboard the vessel from a booking list or visually from a terminal/shed position ashore.

Booking lists are made by the user onboard or sent to the vessel and imported automatically. Cargo plans and various reports can be sent from vessel to operators, ports, agents etc.

Main features

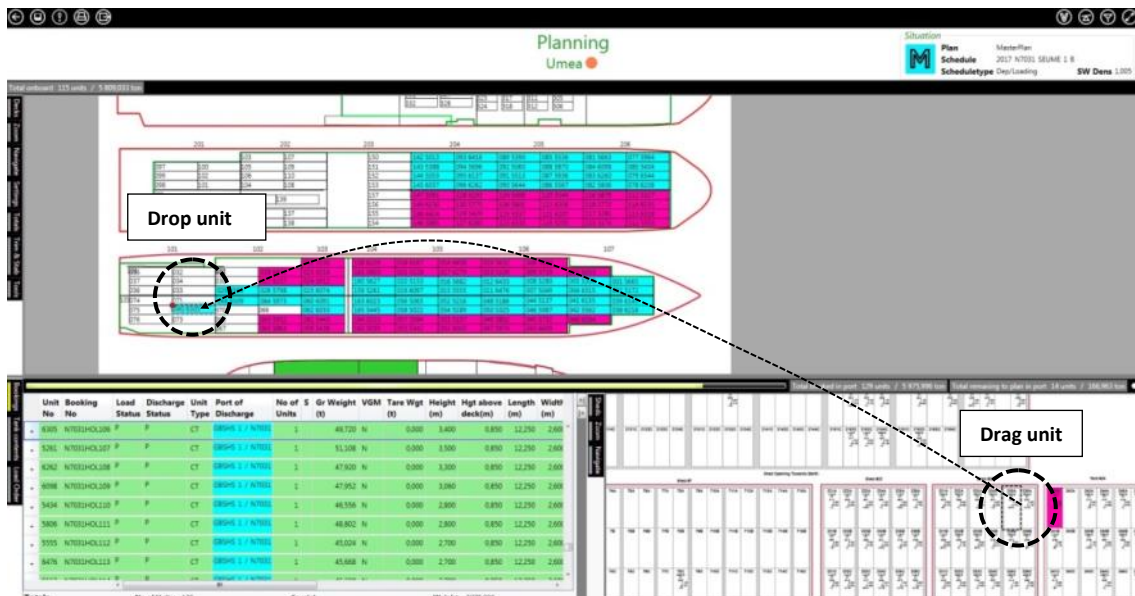
Atlanta 2 is a load planning system where booking lists can be sent to the vessel from an office based booking system. In addition bookings can be entered manually. These bookings are used to plan the loading of the vessel via drag & drop functionality.



Colors are used to separate cargo units, either by Port of Loading (PoL) or Port of Discharge (PoD). Colors can be changed by the end user. Different settings enable the user to specify the information to be displayed.

Loading/planning (drag & drop function)

Atlanta 2 uses drag & drop functionality, which enables the user to select a cargo unit from a booking list or from a shed position in port and place it onboard, either in a predefined position or in a free area. It is also possible to add bookings or units (containers, cassettes, cars etc.) and place them "en bloc" in a free area on the deck or in the cargo hold.



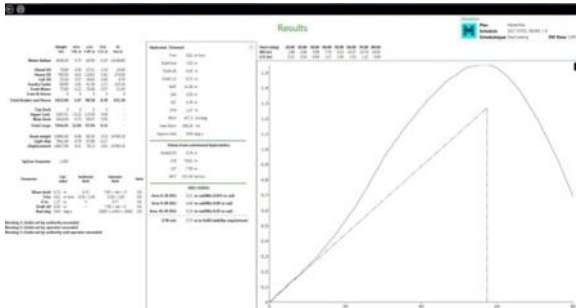
Load order list

Seq no	From deck/shed	Position	Unit type	Unit no	To deck	Position	Cargo	PoD	Free text
1	P: 22	221B	CT	5327	CU	112	WS	NLSLR	
2	P: 22	221C	CT	6235	CU	114	KL	NLSLR	
3	P: 23	233D	CT	6208	CU	078	KL	GBSHS	
4	P: 23	232D	CT	6544	CU	079	KL	GBSHS	
5	P: 23	232B	CT	6260	CU	083	KL	GBSHS	
6	P: 23	233B	CT	5806	CU	082	EKKL	GBSHS	
7	P: 22	223D	CT	5879	CU	116	KL	NLSLR	
8	P: 22	224E	CT	5772	CU	118	KL	NLSLR	
9	P: 22	224C	CT	6356	CU	122	KLWS	NLSLR	
10	P: 22	224B	CT	5544	CU	120	WSKL	NLSLR	
11	P: 21	2154C	CT	5567	CU	086	KL	GBSHS	
12	P: 21	2154B	CT	5936	CU	087	KL	GBSHS	

The load order feature gives the cargo planner onboard the vessel a possibility to check that the loading sequences and activities will not endanger the vessels stability. It will also ensure smooth and effective loading/discharging activities once in port.

The load order list can be sent for example to upcoming ports so that the stevedores can plan their loading and discharge activities accordingly.

Vessels trim & stability



All necessary information about the vessels trim and stability is calculated by the program. When planning a cargo operation the user can simulate which trim & stability conditions the vessel will have upon arrival, in port and on departing by adjusting cargo as well as the contents of all tanks onboard (bunker, ballast and miscellaneous).

Atlanta 2 gives instant information about the trim & stability conditions of the vessel for every change done by the user.

Booking list

Seq no	From deck/shed	Position	Unit type	Unit no	To deck	Position	Cargo	PoD	Free text
1	P: 22	221B	CT	5327	CU	112	WS	NLSLR	
2	P: 22	221C	CT	6235	CU	114	KL	NLSLR	
3	P: 23	233D	CT	6208	CU	078	KL	GBSHS	
4	P: 23	232D	CT	6544	CU	079	KL	GBSHS	
5	P: 23	232B	CT	6260	CU	083	KL	GBSHS	
6	P: 23	233B	CT	5806	CU	082	EKKL	GBSHS	
7	P: 22	223D	CT	5879	CU	116	KL	NLSLR	
8	P: 22	224E	CT	5772	CU	118	KL	NLSLR	
9	P: 22	224C	CT	6356	CU	122	KLWS	NLSLR	
10	P: 22	224B	CT	5544	CU	120	WSKL	NLSLR	
11	P: 21	2154C	CT	5567	CU	086	KL	GBSHS	
12	P: 21	2154B	CT	5936	CU	087	KL	GBSHS	

The booking list used for cargo planning can be downloaded from an external source or inserted manually by the user. The specific information in the booking list is determined by the user, but should at least contain information such as Port of Loading (PoL), Port of Discharge (PoD), weight, dimensions, type of cargo unit and if applicable stowage factor, dangerous goods and other relevant information. If necessary, more information can be added.

Booking lists and plans can be exchanged between the vessel to/from offices, ports, agents and customers.

Reports

Various reports can be generated and sent to offices, ports and stevedoring companies, such as:

- Bookings and booking list
- Cargo details
- Tank contents and tank gauging
- Load order and loading list
- Trim & stability and stress

Approval of load- & stability program

Atlanta 2 is prepared to be approved and certified by any classification society.



Booking system

SeaSolutions may also provide a customised booking system, which can be used in combination with Atlanta 2.

The booking system gives the users onboard, operators, customers and ports easy access to send and retrieve cargo information.

Compatibility and updating of the program

Atlanta 2 is continuously improved and customised based on feedback from our customers.

Atlanta 2 is Windows 10 compatible.

If you wish to receive more information about Atlanta 2 please let us know and we will be pleased to assist you.

SeaSolutions ApS
Vandtårnsvej 62A, 3E
DK-2860 Søborg (Copenhagen)
Denmark
Web: www.seasolutions.dk
E-mail: lni@seasolutions.dk